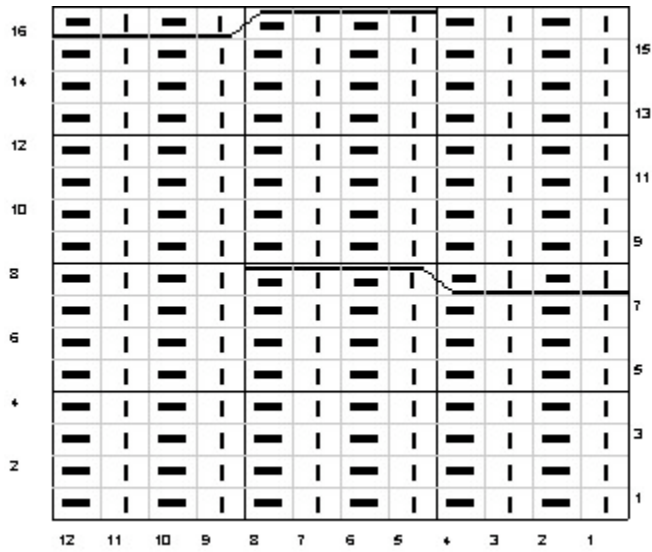
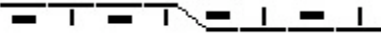



Ribbed Cable Pattern Chart



| Knit

— Purl

 FC (front cable): Slip 4 stitches to cable needle and hold to front, (k1, p1) twice from left needle, (k1, p1) twice from cable needle.

 BC (back cable): Slip 4 stitches to cable needle and hold to back, (k1, p1) twice from left needle, (k1, p1) twice from cable needle.